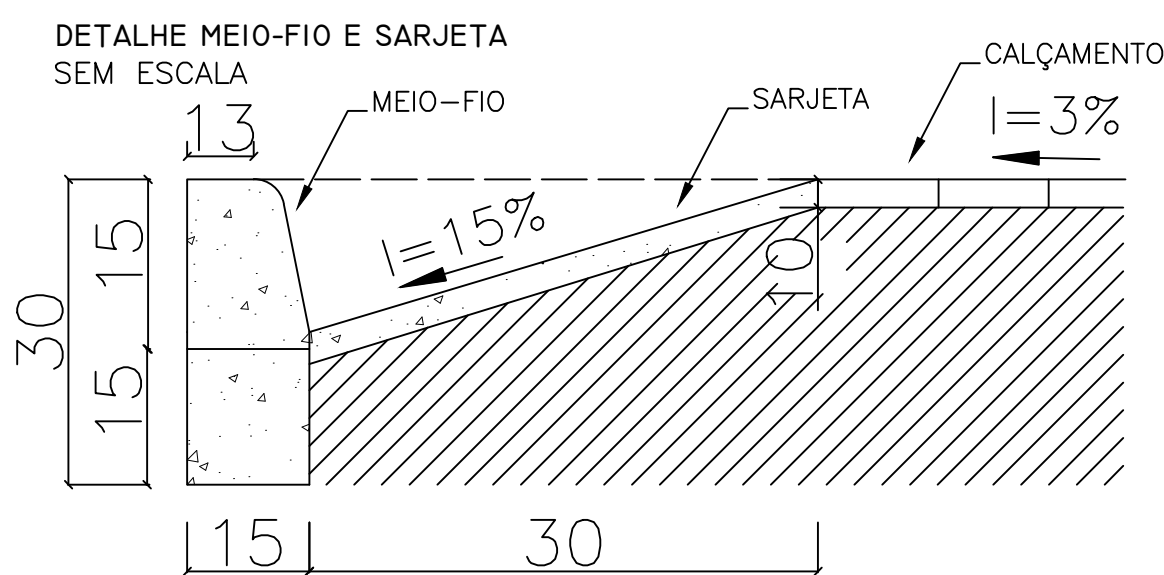
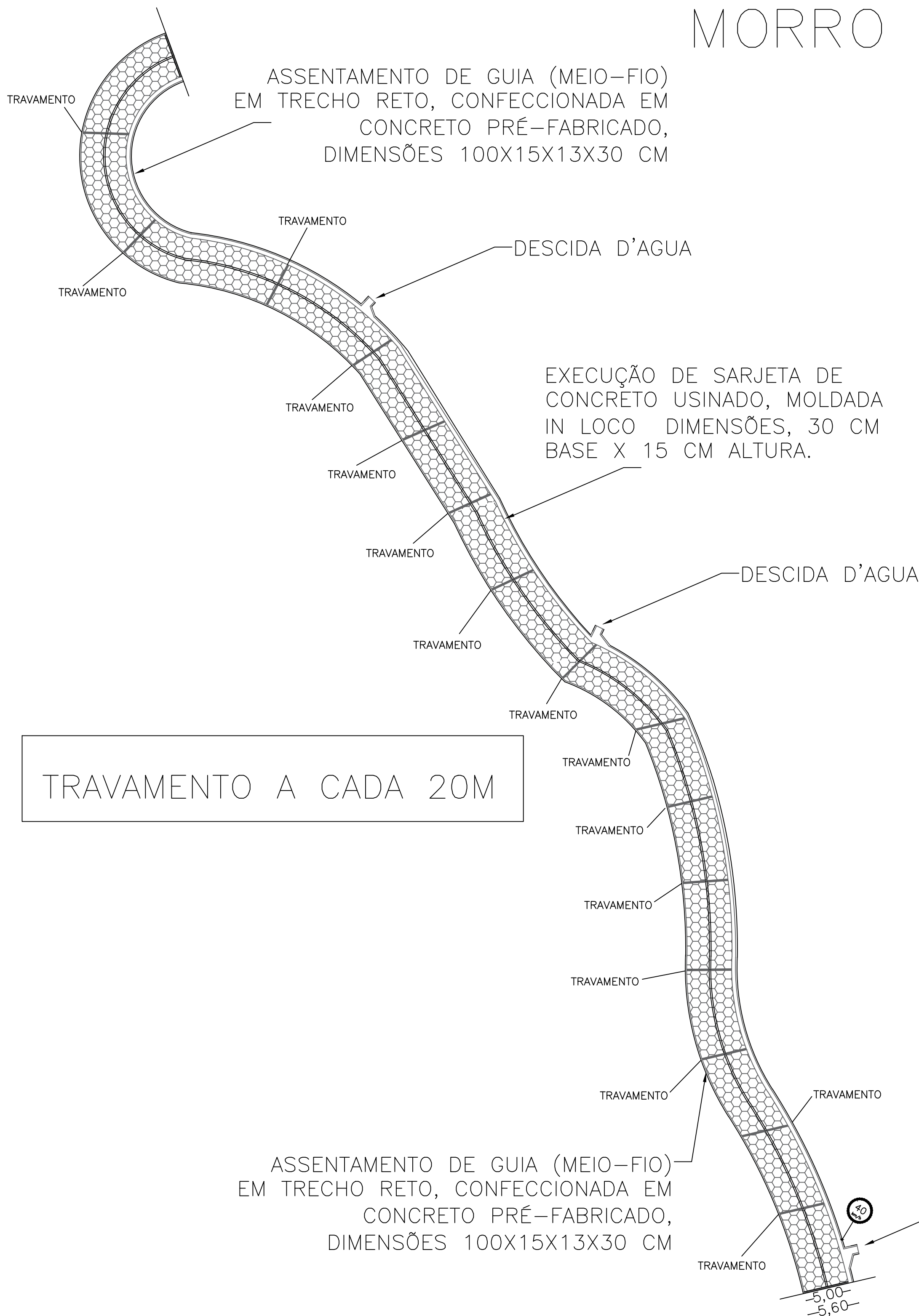


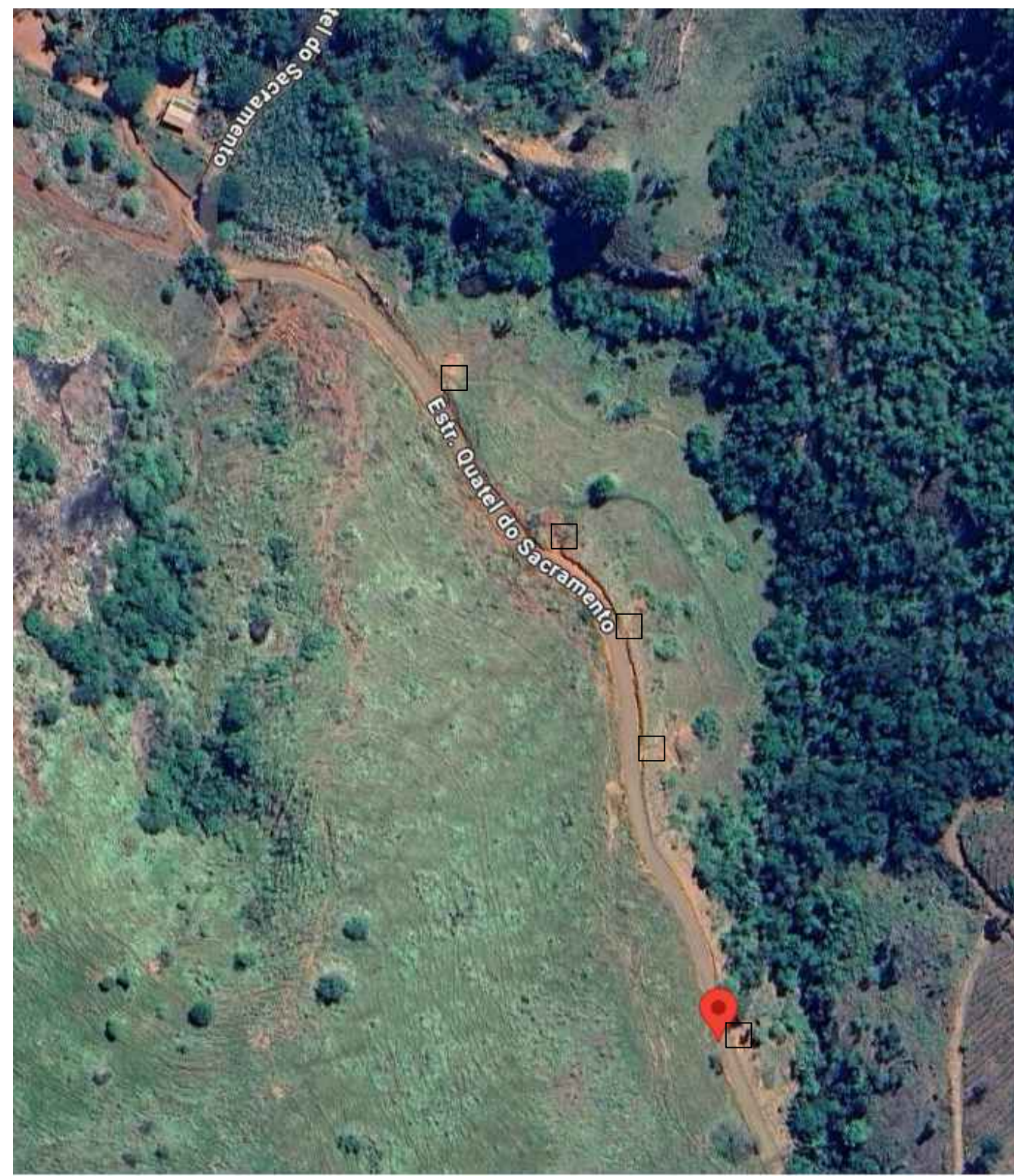
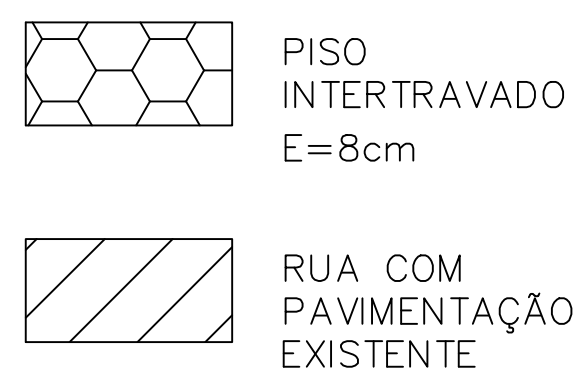
PREFEITURA MUNICIPAL DE BOM JESUS DO GALHO

PAVIMENTAÇÃO EM BLOCO DE CONCRETO

MORRO DO GERALDO PORTUGUES

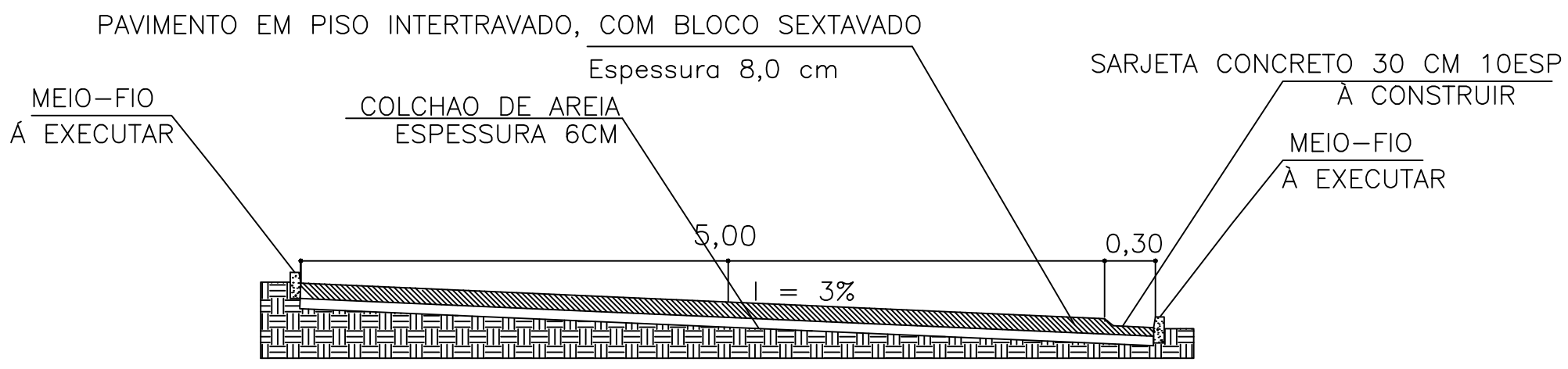


LEGENDA:



CROQUI DE LOCALIZAÇÃO  
ESCALA S/ESCALA

SEÇÃO TRANSVERSAL DE PISTA DE ROLAMENTO



QUADRO RESUMO DA PAVIMENTAÇÃO

MORROPORTUGUES	LARGURA (m)	COMPRIMENTO (m)	ÁREA(m²)	MEIO FIO(m)	SARJETA (M)	TRAVAMENTO(m)
-19.747028 , -42.337763	5,00	330,00	1.665,00	660,00	330,00	85,00
						TRAVAMENTO A CADA 20M